



ej

**135**  
Years  
Since 1883

## Access Hatch Solutions



# Table of Contents

<b>Access Hatch Load Ratings</b>	<b>4</b>
<b>Fabricated Access Hatches</b>	<b>5</b>
<b>Ductile Iron Access Hatches</b>	<b>32</b>
<b>Additional Fabrication Solutions</b>	<b>34</b>

## Access Hatch Solutions

Section	Category	Description	Page
<b>Overview</b>		Introduction	3
		Access Hatch Load Ratings	4
<b>Fabricated Access Hatch Features and Options</b>		Frame Types—Channel Frame	6
		Frame Types—Angle Frame	7
		Load Rating, Lift Handle, Covers, Engraving Options	8
		Lift Assist Option	9
		SAFE HATCH® Safety Access System	10
		Safety—Additional, Nut Rail Option, Security	11
		Forming Skirts	12
		Infill Floor Doors	13
<b>Aluminum Access Hatches</b>	Standard Channel Frames	Channel Frame, Pedestrian Rated	15
		Channel Frame, Pedestrian Rated with SAFE HATCH®	
		Safety Access System	16
		Channel Frame, Pedestrian Rated, Lift Assist	18
		Channel Frame, H20 Rated, Lift Assist	19
		Channel Frame, H20 Rated, Lift Assist with SAFE HATCH® Safety Access System	20
	Standard Angle Frames	Angle Frame, Pedestrian Rated	23
		Angle Frame, Pedestrian Rated with SAFE HATCH®	
		Safety Access System	24
		Angle Frame, H20 Rated, Lift Assist	27
		Angle Frame, H20 Rated, Lift Assist with SAFE HATCH®	
		Safety Access System	28
<b>Ductile Iron Hatches and Modular Covers</b>		ERMATIC® Modular Covers	31
		Ductile Iron Hinged Hatch Access Assembly	32
<b>Additional Fabricated Solutions</b>		Fabricated Products	35
		We Design Solutions	36
		Retrofit and Top Mount	37
		Custom Applications	38
		Made in the USA	39

Make access, inspection, and maintenance easy with hatches from EJ.

We offer a broad range of reliable products that include optimized designs to meet a variety of applications, from pedestrian walkways to roadway traffic, up to the most rigorous standards for our world's airports and ports.

Our expert teams will find the best solutions, whether they are made from cast or fabricated materials.



Fabricated Access Hatches for  
Non-Traffic or Unintended Vehicular Traffic



Ductile Iron Access Hatches and Covers for  
Heavy Duty Traffic and  
Extra Heavy Duty Airport Traffic



Custom Fabricated Solutions for  
Special Applications



# Access Hatch Load Requirements

Let us help you find the right features for your hatch from our selection of standard assemblies, or speak with your local EJ sales representative about your project to have us custom build to meet your exact specifications.

## Load Requirement Definitions

### Non-traffic Load Requirement

- Non-traffic, pedestrian rated
- Material is aluminum
- 300 lb per sq ft live load
- Deflection shall not exceed 1/150th of the span



### Unintended Vehicular Traffic Load Requirement

- Unintended vehicular traffic
- Material is aluminum
- 20,800 lb (16,000 lb plus 30% impact factor) on a 10" x 20" tire contact area
- AASHTO H20 Standard Specifications for Highway Bridges\*
- [Do not place in wheel line](#)



### Vehicular Traffic Load Requirement

- Heavy duty vehicular traffic
- Material is ductile iron
- AASHTO M 306 loading\*
- 40,000 lb (16,000 lb plus 250% safety factor) on a 9" x 9" tire contact area
- Proof load tested for 1 minute without failure



### Airport Load Requirement

- Extra heavy duty airport and port authority traffic
- Material is ductile iron
- Proof load tested on a 9" x 9" tire contact area to a minimum of 200,000 lb



\*AASHTO H20 per the Standard Specifications for Highway Bridges is theoretically calculated using safety factors vs actual proof load testing for AASHTO M 306 Standard Specification for Drainage, Sewer, Utility, and Related Castings.

## Fabricated Access Hatches Features and Options



## Frame Types

It all starts with the right foundation. We offer two main frame types—channel frame for keeping water out of your structure and angle frame when it isn't as critical to keep water out.

### Channel Frame

Help to keep rainwater out of your structure by using channel frame hatches for non-traffic, pedestrian rated to unintended vehicular traffic rated applications.\*

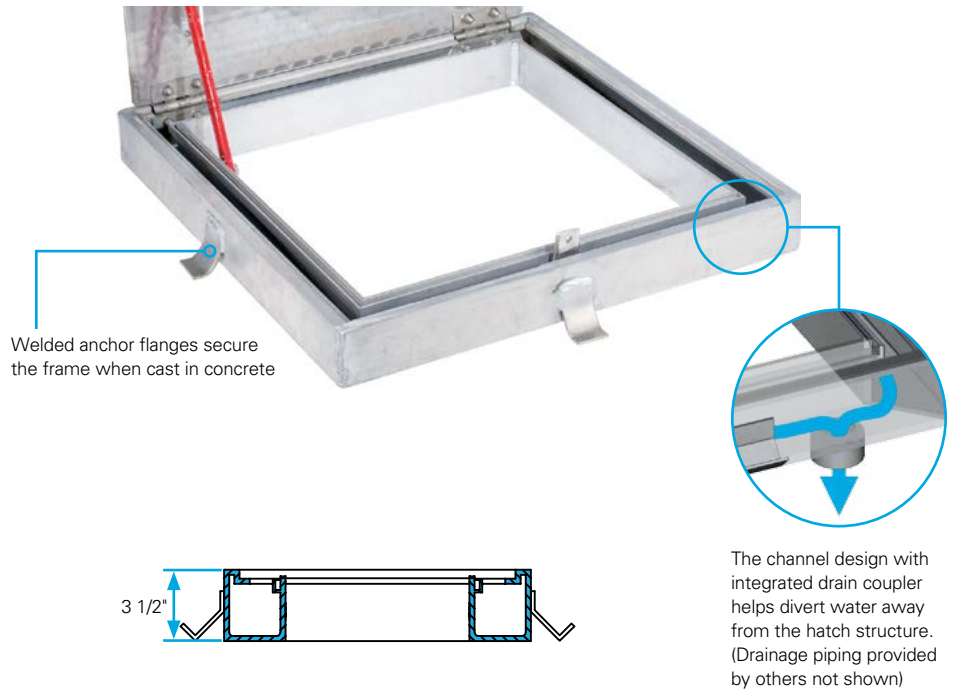
Our extruded aluminum channel frame design collects water that bypasses the cover and drains through an integrated drain coupler (drainage piping provided by others).

Channel frames excel when used in cast in concrete applications. They can also be modified for custom top mount applications as well.

Optional forming skirts add more base height and speed up construction by eliminating extra time and materials to build forming during precasting or on site (see page 12 for additional information).

Optional gaskets are available.

See pages 14-21 for our standard channel frame hatches.



### Optional Gaskets

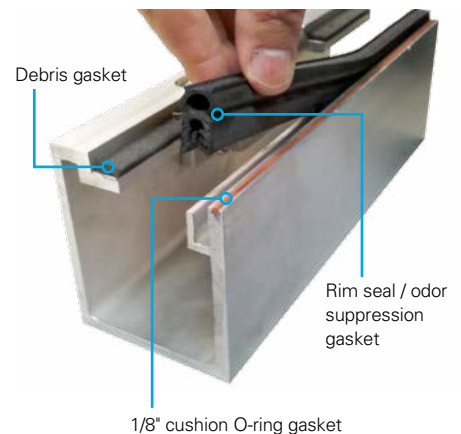
Our channel frames can be used as is, or they can use our integrated extrusion features to add optional gaskets for:

- reducing debris infiltration
- suppressing odors
- sound dampening

3 gasket options available:

- 1/8" cushion O-ring gasket
- debris gasket
- odor suppression/rim seal gasket

Gaskets can be ordered pre-installed with the hatch or can be installed any time after installation.



\*Frame alone doesn't assure unintended vehicular traffic rating. Consult with your EJ sales representative for correct products to meet the needs of unintended vehicular traffic rated applications.

## Angle Frame

Solve access for a variety of structures with angle frame hatches.

Our extruded aluminum angle frames come in two versions:

- non-traffic, pedestrian rated
- unintended vehicular traffic rated

Whether used for top mount or cast in applications, we have a wide selection of standard sizes to simplify your project.

Optional forming skirts add more base height and speed up construction by eliminating extra time and materials to build forming during precasting or on site (see page 12 for additional information).

Optional debris gasket are available.

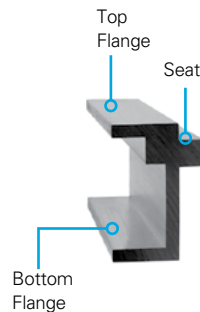
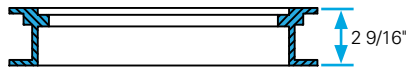
See pages 22-29 for our standard angle frame hatches.



Showing non-traffic, pedestrian application angle frame

### For Non-traffic, Pedestrian Applications

Engineered to maximize efficiency, our lean design is built for pedestrian rated applications.

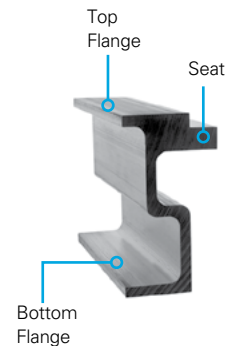
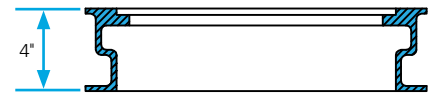


**Top Flange—**  
Same width as bottom flange, allowing adjacent hatches to be installed flush for side-by-side applications.

**Seat—**  
Optional seat gasket available to reduce debris infiltration and provide sound dampening

### For Unintended Vehicular Traffic Applications\*

With added strength, this frame is used for unintended vehicular traffic applications.



**Bottom Flange—**  
Acts as anchor flange when cast in concrete, as well as providing bolting surface.

\*Frame alone doesn't assure unintended vehicular traffic rating. Consult with your EJ sales representative for correct products to meet the needs of unintended vehicular traffic rated applications.



## Load Rating



### Non-traffic, Pedestrian Rated

Light weight and durable—safe for pedestrians at 300 lb per sq ft live load.



### Unintended Vehicular Traffic Rated

Engineered with more robust fabrication—meets the needs of AASHTO H20 rating.

## Hinges



Robust, heavy duty grade 316 stainless steel hinge hardware with 3/8" diameter pins provide long, dependable life.

## Lift Handle



Lift handle gives a secure grip for opening and closing the cover. Recessed pocket allows handle to fall to a flush resting position when cover is closed. Available in cast aluminum or stainless steel.

## Covers



Aluminum 1/4" diamond plate cover is a durable, light weight, and corrosion resistant alternative to cast iron hatches for pedestrian and unintended vehicular traffic applications.

## Engraving Option



Add unique identifiers or artwork to your covers (shown with sure grip treatment).



### Standard

Regular non-treated aluminum plate



### Sure Grip Option

Added non-slip protection to keep pedestrians safe



# Lift Assist Option

## Pneumatic Lift Assist for Aluminum and Steel Access Hatches



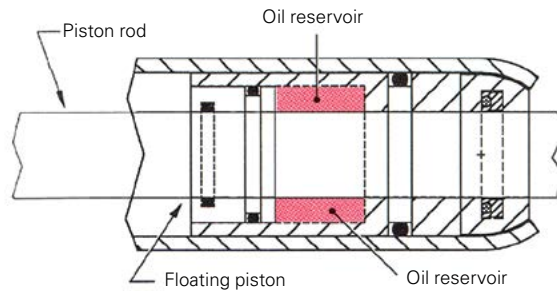
Make opening covers even easier with pneumatic lift assist for reliable and smooth operation year after year.

- Durable: Heavy duty stainless steel construction
- Quality materials are assembled with close manufacturing tolerances to assure long life.
- Easy maintenance: Trouble-free operation
- In the event a lift assist component must be replaced, removal and re-installation is a simple matter requiring the removal of just three bolts.
- Space saving: Fits in confined spaces
- The stainless steel pneumatic spring design allows the lift assist to be installed in a horizontal position where the lift assist device mounts can be confined to the concrete slab thickness.

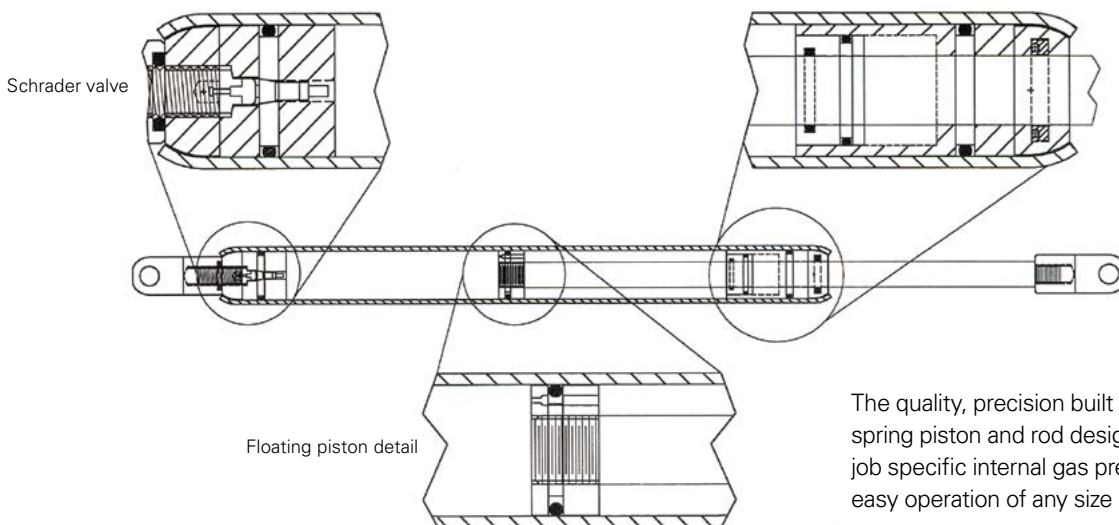


### Lift Assist

Pneumatic lift assist to easily open steel and aluminum access hatches.



The spring's oil reservoir and heavy duty stainless steel construction allow for years of trouble-free operation.



The quality, precision built stainless steel pneumatic spring piston and rod design is custom loaded with job specific internal gas pressure to ensure smooth, easy operation of any size hatch.

## Safety—SAFE HATCH® Safety Access System

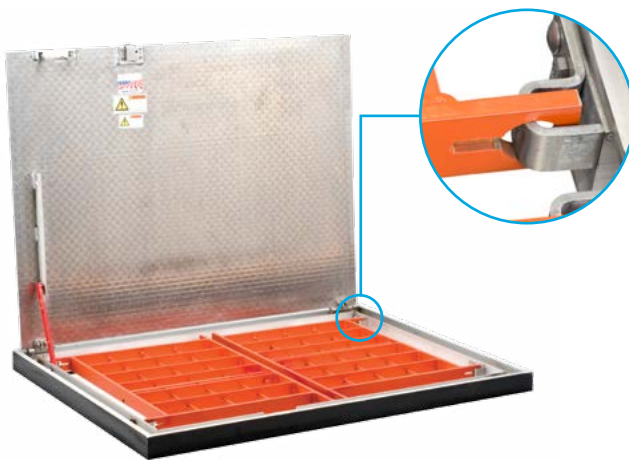
The patented\* SAFE HATCH Safety Access System combines covering the opening per OSHA standard 1910.23, fall through protection and controlled confined space entry with the lockable safety grate.

### Standard Features

- Covers cannot be closed unless the fall through protection has been put back in place (protecting the next operator).
- Visual inspections and limited maintenance can be done while safety grate is left in place.
- Safety orange aluminum grates create a visual barrier around the pit. The aluminum safety grates are coated with safety orange to create visual awareness of the hazard.

### Quality Components

Built with all stainless steel hardware, grates are also designed to withstand corrosive environments and provide 300 lb per sq ft non-traffic, pedestrian rated fall through protection. Also available in H20 for unintended vehicular traffic.



Closed safety grates  
300 lb per sq ft non-traffic, pedestrian rated fall through protection



Open grates lock in the 90° position  
Safety orange aluminum grates provide a visual awareness of the hazard

### Purpose Built



The lightweight aluminum safety grate is easily operated using the integrated pull arm. The operator pulls towards them and away from the pit minimizing exposure to the open structure below.

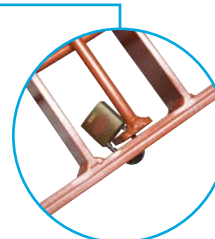
The pull arm is also lockable providing control to the confined space.



More robust aluminum safety grates, designed for unintended vehicular traffic. Comes with lift assist for ease of use when opening grate.



### Added Security



For structures requiring different levels of security for inspection and full access, the safety grate pull arm can be locked to keep the safety grate from opening, preventing access into the structure.<sup>†</sup>

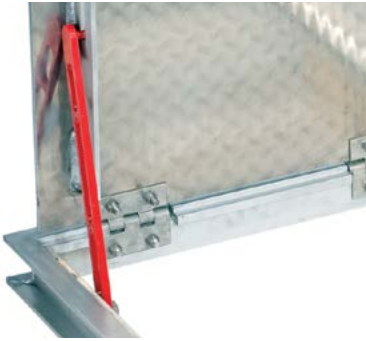


Safety grates for unintended vehicular traffic rated applications have a locking tab added to the grate, allowing a padlock to secure the grate to the frame.<sup>†</sup>

\*US Patent 6,640,495 & 6,718,692. Canada Patent 2,297,523

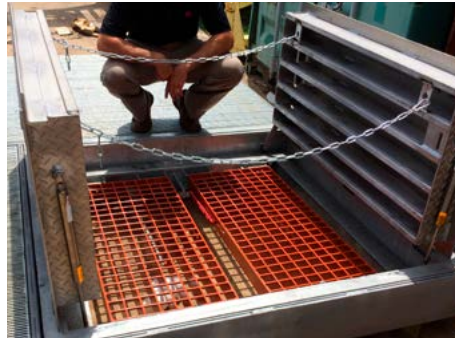
<sup>†</sup>Note: Padlock by others.

## Safety—Additional



### Self-engaging Safety Bar

Highly visible and strong stainless steel safety bar automatically engages when the cover fully opens—keeping the cover from accidentally closing.



### Safety Chain Option

Safety chain provides a visual barrier while the covers are open.

## Nut Rail Option



Integrate mounting points for spring nut and bolt systems, conduit clamps, and other hardware.

## Security Options



### Recessed Padlock Clip

Conceals the lock under a protective cover, resting flush with the cover when closed.\*



### Exposed Padlock Clip

Available where flush cover profile is not required.\*

### Slam Lock

The weight of the cover causes the latch to automatically lock when the cover is closed.



(Showing under side of slam lock.)



Slam lock T-handle key with flat head tip. Also available in pentahead tip design for greater security.



Slam lock key used to unscrew the plug. The plug covers the keyway and keeps it free of debris while reducing infiltration.



Slam lock plug removed, giving access to the keyway. Also available in pentahead plug design.



Turning the key to the unlock position and lifting on the handle opens the hatch.

\*Note: Padlock by others.



## Forming Skirts

EJ custom fabricated, leave-in-place aluminum forming skirt system works with aluminum or ductile iron hatch lines to create a frame height that matches any concrete top slab thickness. Precasters and general contractors can eliminate the time and material consuming operations of building and removing temporary frames. These fabricated skirts integrate to allow “set and pour” ease of installation.

### Benefits

- Custom sizes—any height can be accommodated
- Reduce time and labor costs:
  - No need to build a temporary frame
  - Leave-in-place form eliminates the need to remove form after concrete pour
- Works with optional SAFE HATCH® Safety Access System
- Creates a smooth interior opening



Product shown upside-down.

### Set and Pour with Ease



Set the hatch with integrated custom skirt in place, pour concrete and you're done. Reduce your cost of labor, time, and materials, and increase your production rate.



Aluminum forming skirt extends frame height to match any form thickness. Available for aluminum and ductile iron hatch assemblies.

## Infill Floor Doors

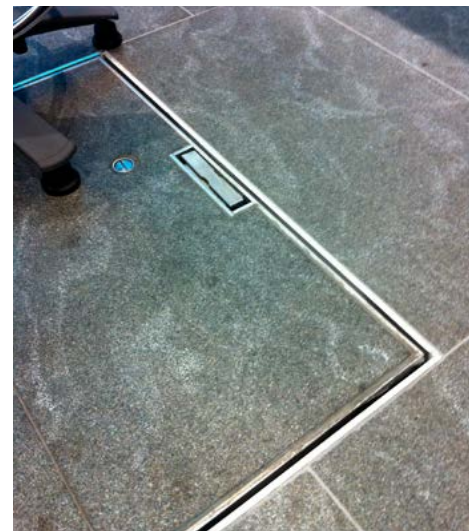
Infill floor doors by EJ provide a sturdy, durable way to seamlessly integrate your paver or concrete design across the site. Maintain the flow and identity of streetscapes, campus, or park landscapes. Infill hatches accommodate pavers of varying heights or concrete to match your creativity.

Like the outstanding quality and longevity of non-traffic aluminum hatches by EJ, our infill hatches utilize superior grade stainless steel hardware.

With a variety of security locking options, you can be sure that your underground infrastructure will remain undisturbed.

The smooth and durable stainless steel pneumatic spring lift assist enables easy opening. The hold open arm or optional safety grate ensures safe working conditions.

Infill hatches are currently available in a variety of sizes.



### Infill Floor Doors

Part Number	Clear Opening	Outside Dimension	Infill Depth	Infill Material	Load Rating
H24241619	24" x 24" (610 x 610 mm)	32" (813 mm) square	1" (25 mm)	Pavers or Concrete	Non-traffic, Pedestrian
H30301614	30" x 30" (762 x 762 mm)	38" (966 mm) square	1" (25 mm)	Pavers or Concrete	Non-traffic, Pedestrian
H30365007	30" x 36" (762 x 914 mm)	38" x 44" (965 x 1118 mm)	2" (51 mm)	Concrete	Unintended Vehicular Traffic
H36601712	36" x 60" (914 x 1524 mm)	44" x 68" (1118 x 1728 mm)	1 1/2" (38 mm)	Pavers or Concrete	Non-traffic, Pedestrian
H36721706	36" x 72" (914 x 1829 mm)	44" x 80" (1118 x 2032 mm)	1 1/2" (38 mm)	Pavers or Concrete	Non-traffic, Pedestrian

Note: Standard sizes listed. Contact your local Sales Representative for additional options and sizes.



## Aluminum Access Hatches Standard Channel Frames





## CHANNEL FRAME, PEDESTRIAN RATED

- Non-traffic, pedestrian rated
- Red stainless steel hold open arm
- Heavy duty stainless steel hinges
- Exposed padlock clip
- Extruded aluminum channel frame with 1 1/2" drain coupler on underside of frame
- Aluminum lift handle
- 1/4" aluminum diamond plate cover

See aluminum hatch options on pages 8, 9, and 11 for additional options.

No vehicle traffic allowed.

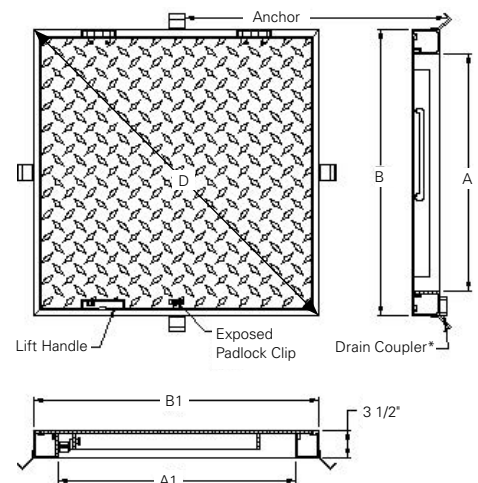


Channel Frame, Pedestrian Rated

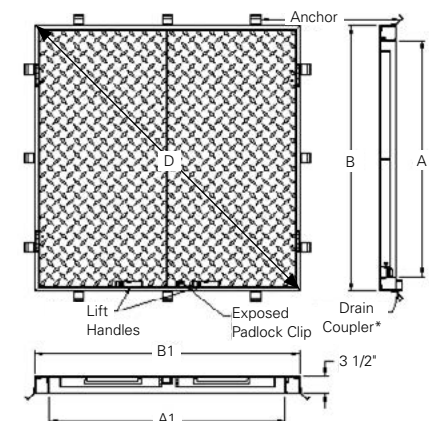
Catalog Number	Description	Inside Dimension A x A1	Outside Dimension B x B1	Height	Diagonal D	Single Cover Weight
H24241401	1 Cover Hatch	24 x 24	30 x 30	3 1/2	42 7/16	21
H24301401	1 Cover Hatch	24 x 30	30 x 36	3 1/2	46 7/8	26
H24361401	1 Cover Hatch	24 x 36	30 x 42	3 1/2	51 5/8	35
H30301401	1 Cover Hatch	30 x 30	36 x 36	3 1/2	50 15/16	32
H30361401	1 Cover Hatch	30 x 36	36 x 42	3 1/2	55 5/16	42
H30481401	1 Cover Hatch	30 x 48	36 x 54	3 1/2	64 7/8	54
H36361401	1 Cover Hatch	36 x 36	42 x 42	3 1/2	59 3/8	49
H36481401	1 Cover Hatch	36 x 48	42 x 54	3 1/2	68 7/16	62
H42421401	1 Cover Hatch	42 x 42	48 x 48	3 1/2	67 7/8	64
H30481501	2 Cover Hatch	30 x 48	36 x 54	3 1/2	64 7/8	29
H30541501	2 Cover Hatch	30 x 54	36 x 60	3 1/2	70	33
H36481501	2 Cover Hatch	36 x 48	42 x 54	3 1/2	68 7/16	36
H36601501	2 Cover Hatch	36 x 60	42 x 66	3 1/2	78 1/4	43
H42481501	2 Cover Hatch	42 x 48	48 x 54	3 1/2	72 1/4	41
H48481501	2 Cover Hatch	48 x 48	54 x 54	3 1/2	76 3/8	48
H48541501	2 Cover Hatch	48 x 54	54 x 60	3 1/2	80 3/4	54
H48721501	2 Cover Hatch	48 x 72	54 x 78	3 1/2	94 7/8	67
H60601501	2 Cover Hatch	60 x 60	66 x 66	3 1/2	93 5/16	73

Note: All dimensions are in inches. All weights are in pounds.

### Single Cover Style



### Double Cover Style



\*Drain Coupler must connect to a drainage system

## CHANNEL FRAME, PEDESTRIAN RATED WITH SAFE HATCH® SAFETY ACCESS SYSTEM

- Non-traffic, pedestrian rated
- Safety orange aluminum safety grate system for fall through protection and controlled confined space entry
- Red stainless steel hold open arm
- Heavy duty stainless steel hinges
- Extruded aluminum channel frame with 1 1/2" drain coupler on underside of frame
- 1/8" cushion O-ring gasket
- Exterior of frame coated with black primer
- Stainless steel slam lock with removable T-handle and threaded stainless steel plug
- Aluminum lift handle
- 1/4" aluminum diamond plate cover

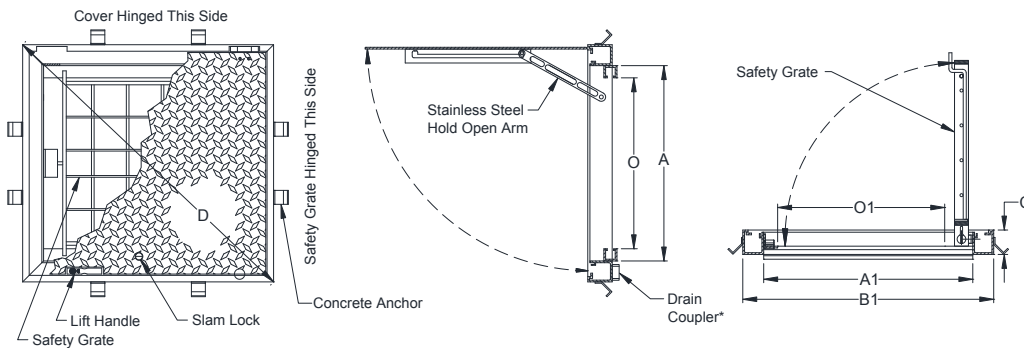
See aluminum hatch options on pages 8 and 9 for additional options.

No vehicle traffic allowed.

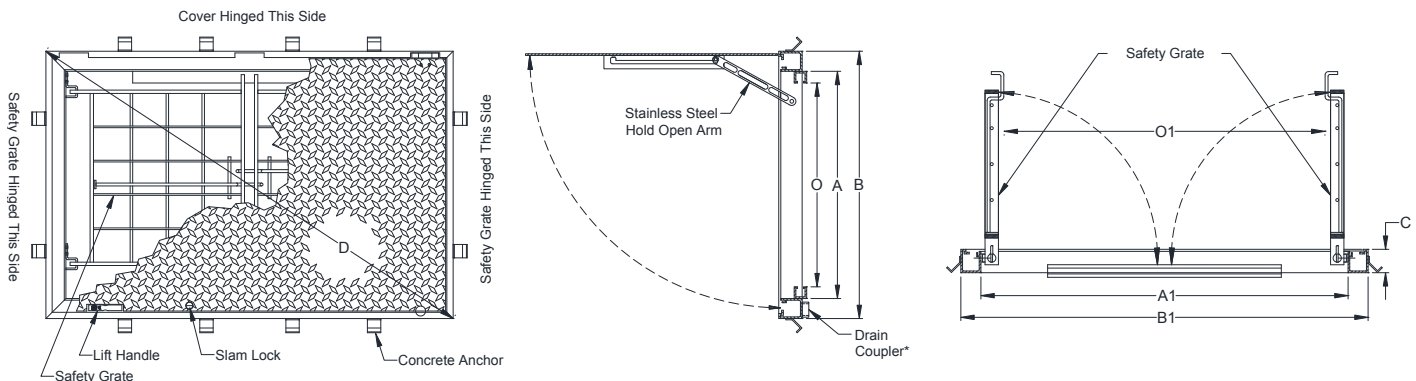


Shown without welded anchor flanges

### Single Grate, Single Cover Style

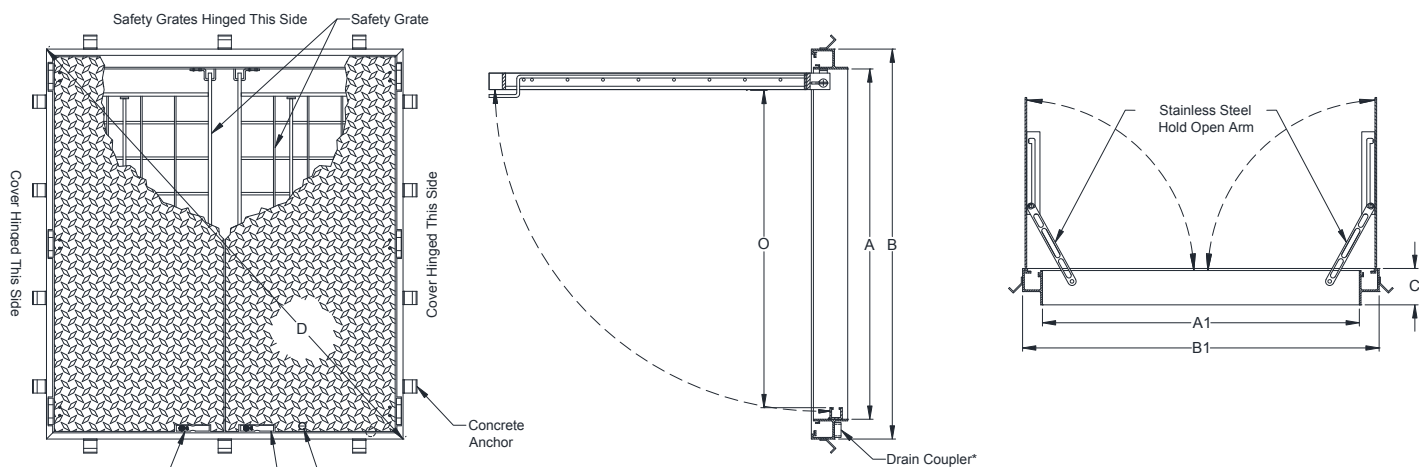


### Double Grate, Single Cover Style



\*Drain Coupler must connect to a drainage system

## Double Grate, Double Cover Style



\*Drain Coupler must connect to a drainage system

Channel Frame with SAFE HATCH® Safety Access System

Catalog Number	Description	Unobstructed Clear Opening O x O1	Inside Dimensions A x A1	Outside Dimensions B x B1	Height C	Diagonal D
Aluminum						

### Single Grate, Single Cover Style

H24241491	1 Cover Hatch	24 1/2 x 25 3/8	28 x 30	34 x 36	3 1/2	49 9/16
H24301491	1 Cover Hatch	24 1/2 x 31 3/8	28 x 36	34 x 42	3 1/2	54 1/16
H24361491	1 Cover Hatch	24 1/2 x 37 3/8	28 x 42	34 x 48	3 1/2	58 13/16
H30301491	1 Cover Hatch	30 1/2 x 31 3/8	34 x 36	40 x 42	3 1/2	58
H30361491	1 Cover Hatch	30 1/2 x 36 7/8	34 x 42	40 x 48	3 1/2	62 1/2
H36361491	1 Cover Hatch	36 1/2 x 36 7/8	40 x 42	46 x 48	3 1/2	66 1/2
H42421491	1 Cover Hatch	42 1/2 x 42 3/8	46 x 48	52 x 54	5 1/2	75

### Double Grate, Single Cover Style

H30481491	1 Cover Hatch	30 1/2 x 48 3/4	34 x 54	40 x 60	3 1/2	72 1/8
H36481491	1 Cover Hatch	36 1/2 x 48 3/4	40 x 54	46 x 60	3 1/2	75 5/8

### Double Grate, Double Cover Style

H30481591	2 Cover Hatch	30 5/8 x 48	35 x 48	41 x 54	3 1/2	67 13/16
H30541591	2 Cover Hatch	30 5/8 x 54	35 x 54	41 x 60	3 1/2	72 11/16
H36481591	2 Cover Hatch	36 5/8 x 48	41 x 48	47 x 54	3 1/2	71 5/8
H36601591	2 Cover Hatch	36 5/8 x 60	41 x 60	47 x 66	3 1/2	81 1/16
H42481591	2 Cover Hatch	42 5/8 x 48	47 x 48	53 x 54	3 1/2	75 11/16
H48481591	2 Cover Hatch	49 1/8 x 48	54 x 48	60 x 54	5 1/2	80 3/4
H48541591	2 Cover Hatch	49 1/8 x 54	54 x 54	60 x 60	5 1/2	84 7/8
H48601591	2 Cover Hatch	48 5/8 x 60	54 x 60	60 x 66	5 1/2	89 3/16
H48721591	2 Cover Hatch	48 5/8 x 72	54 x 72	60 x 78	5 1/2	98 7/16
H60601591	2 Cover Hatch	60 5/8 x 60	66 x 60	72 x 66	5 1/2	97 11/16

Note: All dimensions are in inches.



## CHANNEL FRAME, PEDESTRIAN RATED, LIFT ASSIST

- Non-traffic, pedestrian rated
- Red stainless steel hold open arm
- Heavy duty stainless steel hinges
- Heavy duty stainless steel lift assist
- Extruded aluminum channel frame with 1 1/2" drain coupler on underside of frame
- 1/8" cushion O-ring gasket
- Exterior of frame coated with black primer
- Stainless steel slam lock with removable T-handle and threaded stainless steel plug
- Aluminum lift handle
- 1/4" aluminum diamond plate cover

See aluminum hatch options on pages 8 and 9 for additional options.

No vehicle traffic allowed.



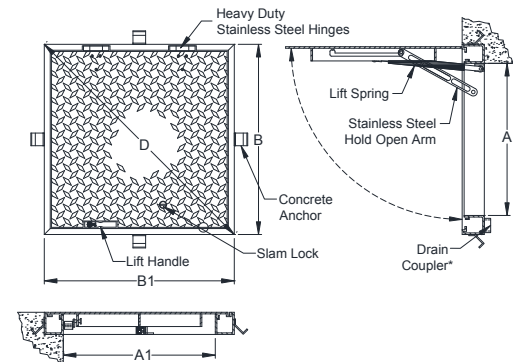
Shown without welded anchor flanges

Channel Frame, Pedestrian Rated, Lift Assist

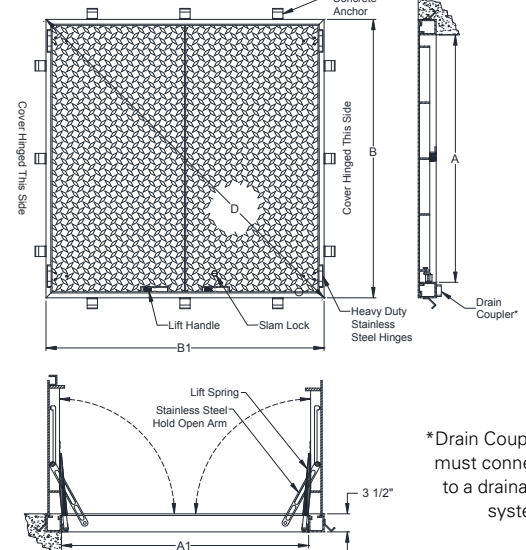
Catalog Number	Description	Inside Dimension A x A1	Outside Dimension B x B1	Height	Diagonal D
Aluminum					
H24241601	1 Cover Hatch	24 x 24	30 x 30	3 1/2	42 7/16
H30301601	1 Cover Hatch	30 x 30	36 x 36	3 1/2	50 15/16
H30361601	1 Cover Hatch	30 x 36	36 x 42	3 1/2	55 5/16
H30481601	1 Cover Hatch	30 x 48	36 x 54	3 1/2	64 7/8
H36361601	1 Cover Hatch	36 x 36	42 x 42	3 1/2	59 3/8
H36481601	1 Cover Hatch	36 x 48	42 x 54	3 1/2	68 7/16
H42421601	1 Cover Hatch	42 x 42	48 x 48	3 1/2	67 7/8
H30601701	2 Cover Hatch	30 x 60	36 x 66	3 1/2	75 3/16
H36601701	2 Cover Hatch	36 x 60	42 x 66	3 1/2	78 1/4
H36721701	2 Cover Hatch	36 x 72	42 x 78	3 1/2	88 9/16
H48481701	2 Cover Hatch	48 x 48	54 x 54	3 1/2	76 3/8
H48721701	2 Cover Hatch	48 x 72	54 x 78	3 1/2	94 7/8
H60601701	2 Cover Hatch	60 x 60	66 x 66	3 1/2	93 5/16

Note: All dimensions are in inches.

Single Cover Style



Double Cover Style



## CHANNEL FRAME, H20 RATED, LIFT ASSIST

- Unintended vehicular traffic rated
- Red stainless steel hold open arm
- Heavy duty stainless steel hinges
- Heavy duty stainless steel lift assist
- Extruded aluminum channel frame with 1 1/2" drain coupler on underside of frame
- 1/8" cushion O-ring gasket
- Exterior of frame coated with black primer
- Stainless steel slam lock with removable T-handle and threaded stainless steel plug
- Heavy duty stainless steel lift handle
- 1/4" aluminum diamond plate cover

See aluminum hatch options on pages 8 and 9 for additional options.



Shown without welded anchor flanges

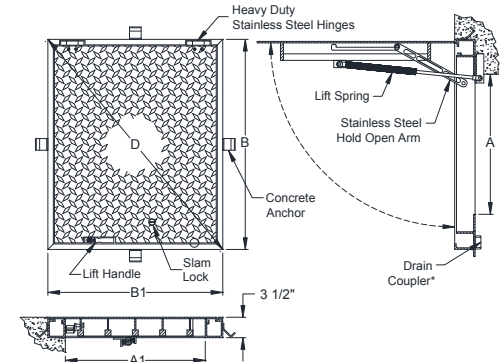
Do not place in wheel line.

Channel Frame, H20, Lift Assist

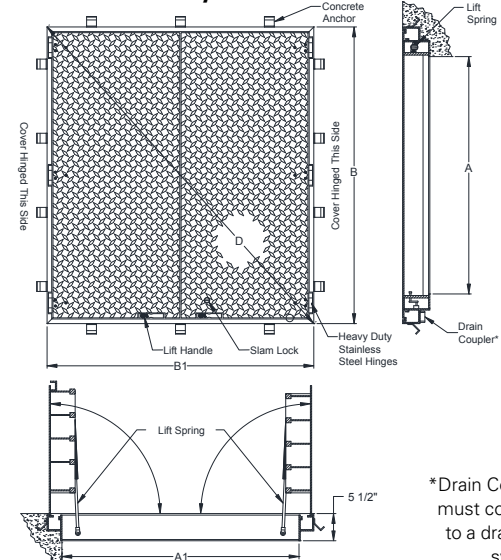
Catalog Number	Description	Inside Dimension A x A1	Outside Dimension B x B1	Height C	Diagonal D
Aluminum					
H24241801	1 Cover Hatch	24 x 24	36 x 30	3 1/2	46 7/8
H24301801	1 Cover Hatch	24 x 30	36 x 36	3 1/2	50 15/16
H24361801	1 Cover Hatch	24 x 36	42 x 36	3 1/2	55 5/16
H30301801	1 Cover Hatch	30 x 30	36 x 42	3 1/2	55 5/16
H30361801	1 Cover Hatch	30 x 36	42 x 42	3 1/2	59 7/16
H30481801	1 Cover Hatch	30 x 48	42 x 54	3 1/2	68 7/16
H36361801	1 Cover Hatch	36 x 36	48 x 42	5 1/2	63 3/4
H36481801	1 Cover Hatch	36 x 48	48 x 54	5 1/2	72 1/4
H42421801	1 Cover Hatch	42 x 42	54 x 48	5 1/2	72 1/4
H30481901	2 Cover Hatch	30 x 48	42 x 54	3 1/2	68 7/16
H30541901	2 Cover Hatch	30 x 54	42 x 60	3 1/2	73 1/4
H36481901	2 Cover Hatch	36 x 48	48 x 54	5 1/2	72 1/4
H36601901	2 Cover Hatch	36 x 60	48 x 66	5 1/2	81 5/8
H42481901	2 Cover Hatch	42 x 48	54 x 54	5 1/2	76 3/8
H48481901	2 Cover Hatch	48 x 48	60 x 54	5 1/2	80 3/4
H48541901	2 Cover Hatch	48 x 54	60 x 60	5 1/2	84 7/8
H48721901	2 Cover Hatch	48 x 72	60 x 78	5 1/2	98 7/16
H60601901	2 Cover Hatch	60 x 60	72 x 66	5 1/2	97 11/16

Note: All dimensions are in inches.

### Single Cover Style



### Double Cover Style



\*Drain Coupler must connect to a drainage system

## CHANNEL FRAME, H20 RATED, LIFT ASSIST WITH SAFE HATCH® SAFETY ACCESS SYSTEM

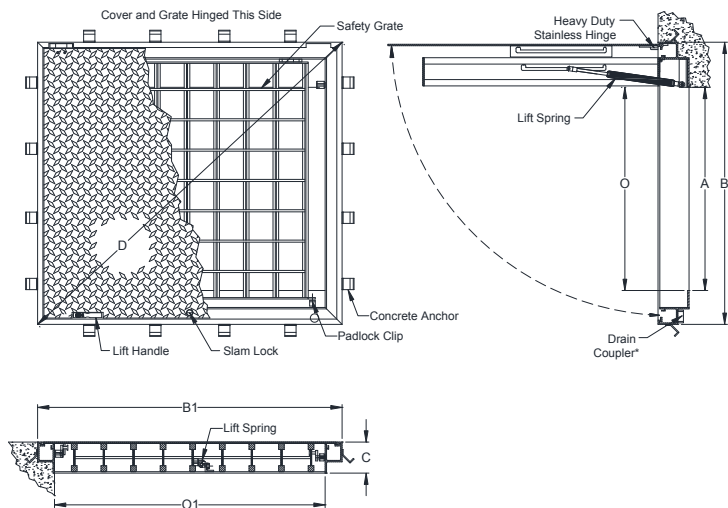
- Unintended vehicular traffic rated
- Safety orange aluminum safety grate system for fall through protection and controlled confined space entry
- Red stainless steel hold open arm
- Heavy duty stainless steel hinges
- Heavy duty stainless steel lift assist
- Extruded aluminum channel frame with 1 1/2" drain coupler on underside of frame
- 1/8" cushion O-ring gasket
- Exterior of frame coated with black primer
- Stainless steel slam lock with removable T-handle and threaded stainless steel plug
- Heavy duty stainless steel lift handle
- 1/4" aluminum diamond plate cover

See aluminum hatch options on pages 8 and 9 for additional options.

Do not place in wheel line.



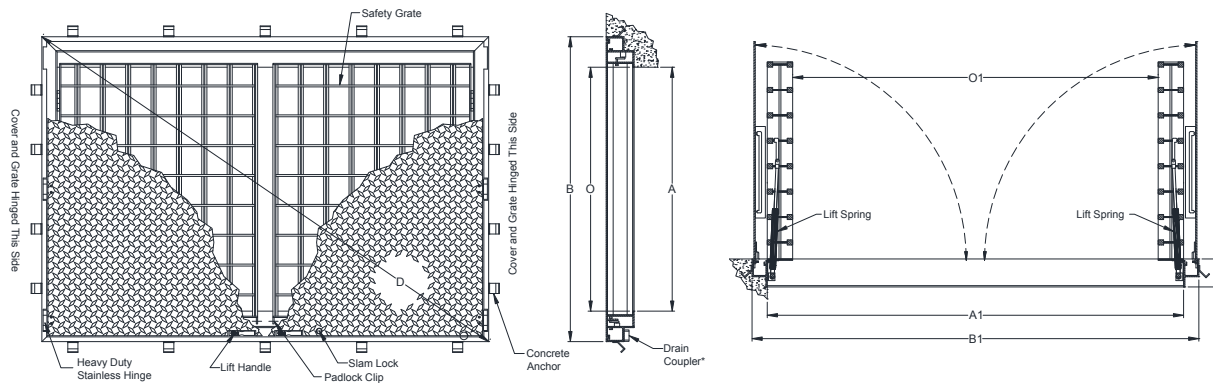
### Single Grate, Single Cover Style



\*Drain Coupler must connect to a drainage system



## Double Grate, Double Cover Style



\*Drain Coupler must connect to a drainage system

Channel Frame with SAFE HATCH® Safety Access System

Catalog Number Aluminum	Description	Unobstructed Clear Opening O x O1	Inside Dimensions A x A1	Outside Dimensions B x B1	Height C	Diagonal D
----------------------------	-------------	---	--------------------------------	---------------------------------	-------------	---------------

### Single Grate, Single Cover Style

H24241891	1 Cover Hatch	24 x 24	32 x 24	38 x 30	5 1/2	48 7/16
H24301891	1 Cover Hatch	24 x 30	32 x 30	38 x 36	5 1/2	52 3/8
H24361891	1 Cover Hatch	24 x 36	32 x 36	38 x 42	5 1/2	56 5/8
H30301891	1 Cover Hatch	30 x 30	38 x 30	44 x 36	5 1/2	56 7/8
H30361891	1 Cover Hatch	30 x 36	38 x 36	44 x 42	5 1/2	60 13/16
H30481891	1 Cover Hatch	30 x 48	38 x 48	44 x 54	5 1/2	69 11/16
H36361891	1 Cover Hatch	36 x 36	44 x 36	50 x 42	5 1/2	65 5/16
H36481891	1 Cover Hatch	36 x 48	44 x 48	50 x 54	5 1/2	73 5/8
H42421891	1 Cover Hatch	42 x 42	50 x 42	56 x 48	5 1/2	73 3/4

### Double Grate, Double Cover Style

H30481991	2 Cover Hatch	30 x 48	30 x 58	42 x 64	5 1/2	76 9/16
H30541991	2 Cover Hatch	30 x 54	30 x 64	42 x 70	5 1/2	81 5/8
H36481991	2 Cover Hatch	36 x 48	36 x 58	48 x 64	5 1/2	80
H36601991	2 Cover Hatch	36 x 60	36 x 70	48 x 76	5 1/2	89 7/8
H42481991	2 Cover Hatch	42 x 48	42 x 58	54 x 64	5 1/2	83 3/4
H48481991	2 Cover Hatch	48 x 48	48 x 58	60 x 64	5 1/2	87 3/4
H48541991	2 Cover Hatch	48 x 54	48 x 64	60 x 70	5 1/2	92 3/16
H48601991	2 Cover Hatch	48 x 60	48 x 70	60 x 76	5 1/2	96 7/8
H48721991	2 Cover Hatch	48 x 72	48 x 82	60 x 88	5 1/2	106 1/2
H60601991	2 Cover Hatch	60 x 60	60 x 70	72 x 76	5 1/2	104 11/16
H60721991	2 Cover Hatch	60 x 72	60 x 82	72 x 88	5 1/2	113 11/16

Note: All dimensions are in inches.

## Aluminum Access Hatches Standard Angle Frames



## ANGLE FRAME, PEDESTRIAN RATED

- Non-traffic, pedestrian rated
- Red stainless steel hold open arm
- Heavy duty stainless steel hinges
- Exposed padlock clip
- Aluminum lift handle
- Extruded aluminum frame
- 1/4" aluminum diamond plate cover

See aluminum hatch options on pages 8, 9, and 11 for additional options.

No vehicle traffic allowed.

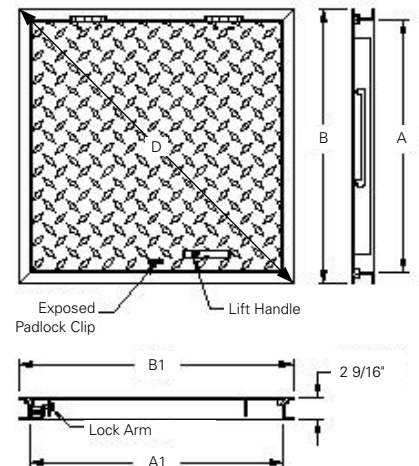


Angle Frame, Pedestrian Rated

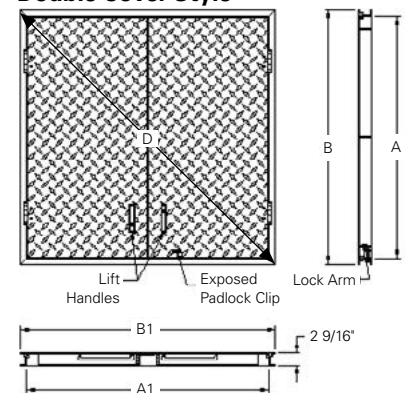
Catalog Number	Description	Inside Dimension A x A1	Outside Dimension B x B1	Diagonal D	Single Cover Weight
H24241001	1 Cover Hatch	24 x 24	26 1/2 x 26 1/2	37 1/2	15
H24301001	1 Cover Hatch	24 x 30	26 1/2 x 32 1/2	41 15/16	20
H24361001	1 Cover Hatch	24 x 36	26 1/2 x 38 1/2	46 3/4	28
H30301001	1 Cover Hatch	30 x 30	32 1/2 x 32 1/2	46	25
H30361001	1 Cover Hatch	30 x 36	32 1/2 x 38 1/2	50 3/8	34
H30481001	1 Cover Hatch	30 x 48	32 1/2 x 50 1/2	60 1/16	44
H36361001	1 Cover Hatch	36 x 36	38 1/2 x 38 1/2	54 7/16	40
H36481001	1 Cover Hatch	36 x 48	38 1/2 x 50 1/2	63 1/2	52
H42421001	1 Cover Hatch	42 x 42	44 1/2 x 44 1/2	62 15/16	53
H30481101	2 Cover Hatch	30 x 48	32 1/2 x 50 1/2	60 1/16	25
H30541101	2 Cover Hatch	30 x 54	32 1/2 x 56 1/2	65 3/16	29
H36481101	2 Cover Hatch	36 x 48	38 1/2 x 50 1/2	63 1/2	31
H36601101	2 Cover Hatch	36 x 60	38 1/2 x 62 1/2	73 7/16	37
H42481101	2 Cover Hatch	42 x 48	44 1/2 x 50 1/2	67 5/16	36
H48481101	2 Cover Hatch	48 x 48	50 1/2 x 50 1/2	71 7/16	41
H48541101	2 Cover Hatch	48 x 54	50 1/2 x 56 1/2	75 3/4	45
H48721101	2 Cover Hatch	48 x 72	50 1/2 x 74 1/2	90	58
H60601101	2 Cover Hatch	60 x 60	62 1/2 x 62 1/2	88 3/8	66

Note: All dimensions are in inches. All weights are in pounds.

Single Cover Style



Double Cover Style





## ANGLE FRAME, PEDESTRIAN RATED WITH SAFE HATCH® SAFETY ACCESS SYSTEM

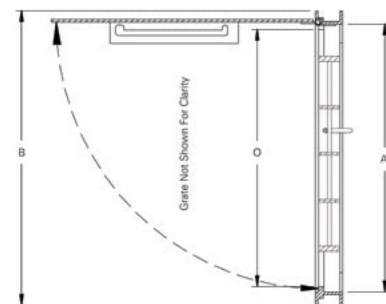
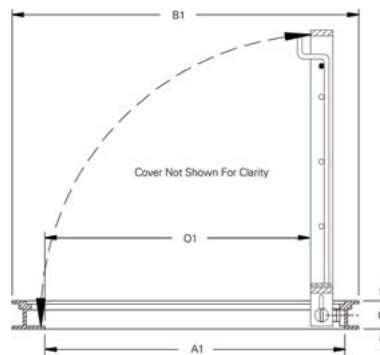
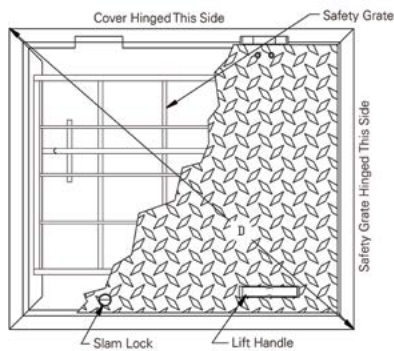
- Non-traffic, pedestrian rated
- Safety orange aluminum safety grate system for fall through protection and controlled confined space entry
- Heavy duty stainless steel hinges
- Exterior of frame coated with black primer
- Stainless steel slam lock with removable T-handle and threaded stainless steel plug
- Stainless steel hardware
- Aluminum lift handle
- Extruded aluminum frame
- 1/4" aluminum diamond plate cover

See aluminum hatch options on pages 8 and 9 for additional options.

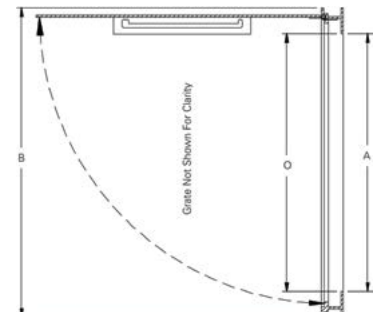
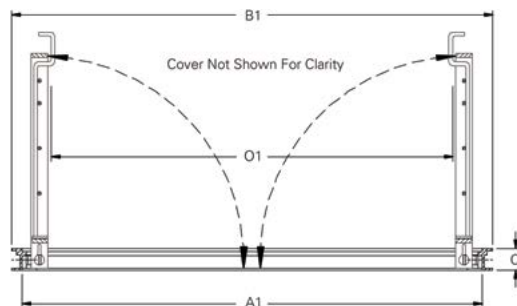
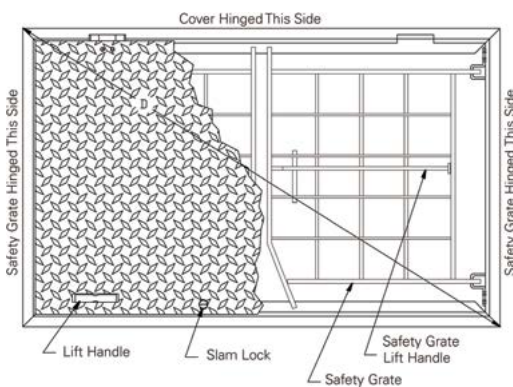
No vehicle traffic allowed.

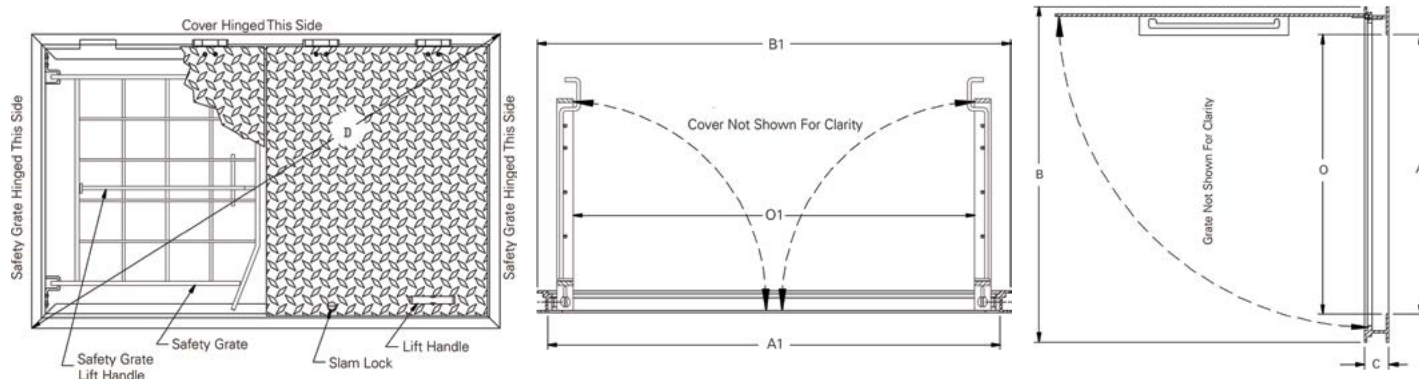


### Single Grate, Single Cover Style



### Double Grate, Single Cover Style



**Double Grate, Double Cover Style**

Angle Frame with SAFE HATCH® Safety Access System

Catalog Number	Description	Unobstructed Clear Opening O x O1	Inside Dimensions A x A1	Outside Dimensions B x B1	Height C	Diagonal D
Aluminum						

**Single Grate, Single Cover Style**

H24241091	1 Cover Hatch	24 x 24	25 x 27 1/4	27 1/2 x 31 1/2	2 9/16	41 13/16
H24301091	1 Cover Hatch	24 x 30	25 x 33 1/4	27 1/2 x 37 1/2	2 9/16	46 1/2
H24361091	1 Cover Hatch	24 x 36	25 x 39 1/4	27 1/2 x 43 1/2	2 9/16	51 7/16
H30301091	1 Cover Hatch	30 x 30	31 x 33 1/4	33 1/2 x 37 1/2	2 9/16	50 5/16
H30361091	1 Cover Hatch	30 x 36	31 x 39 1/4	33 1/2 x 43 1/2	2 9/16	54 7/8
H36361091	1 Cover Hatch	36 x 36	37 x 39 1/4	39 1/2 x 43 1/2	2 9/16	58 3/4
H42421091	1 Cover Hatch	42 x 42	43 x 46 1/4	45 1/2 x 50 1/2	2 9/16	68

**Double Grate, Single Cover Style**

H30481091	1 Cover Hatch	30 x 48	30 x 55	36 x 57 1/2	2 9/16	67 13/16
H36481091	1 Cover Hatch	36 x 48	36 x 55	42 x 57 1/2	2 9/16	71 3/16

**Double Grate, Double Cover Style**

H30481191	2 Cover Hatch	30 x 48	30 x 55	36 x 57 1/2	2 9/16	67 13/16
H30541191	2 Cover Hatch	30 x 54	30 x 61	36 x 63 1/2	2 9/16	73
H36481191	2 Cover Hatch	36 x 48	36 x 55	42 x 57 1/2	2 9/16	71 3/16
H36601191	2 Cover Hatch	36 x 60	36 x 67	42 x 69 1/2	2 9/16	81 3/16
H42481191	2 Cover Hatch	42 x 48	42 x 55	48 x 57 1/2	2 9/16	74 7/8
H48481191	2 Cover Hatch	48 x 48	48 x 56	54 x 58 1/2	2 9/16	79 5/8
H48541191	2 Cover Hatch	48 x 54	48 x 62	54 x 64 1/2	2 9/16	84 1/8
H48721191	2 Cover Hatch	48 x 72	48 x 81	54 x 83 1/2	2 9/16	99 7/16
H60601191	2 Cover Hatch	60 x 60	60 x 69	66 x 71 1/2	2 9/16	97 5/16

Note: All dimensions are in inches.







## ANGLE FRAME, H20, LIFT ASSIST

- Unintended vehicular traffic rated
- Red stainless steel hold open arm
- Heavy duty stainless steel hinges
- Heavy duty stainless steel lift assist
- Extruded aluminum frame
- Exterior of frame coated with black primer
- Stainless steel slam lock with removable T-handle and threaded stainless steel plug
- Heavy duty stainless steel lift handle
- 1/4" aluminum diamond plate cover

See aluminum hatch options on pages 8 and 9 for additional options.

Do not place in wheel line.

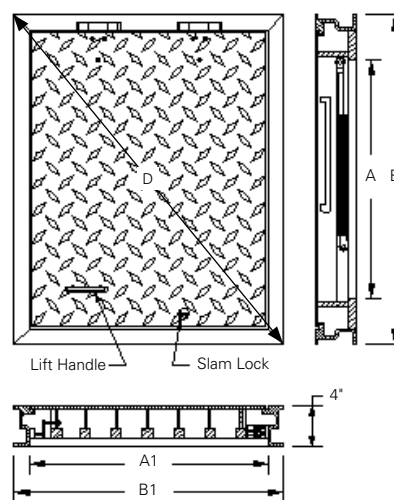


Angle Frame, H20, Lift Assist

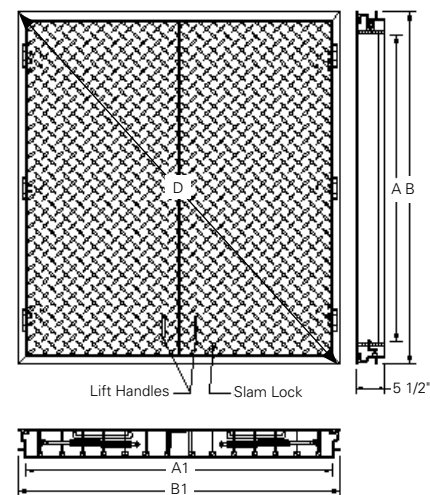
Catalog Number Aluminum	Description	Inside Dimension A x A1	Outside Dimension B x B1	Diagonal D	Height
H24241201	1 Cover Hatch	24 x 24	33 x 27	42 5/8	4
H24301201	1 Cover Hatch	24 x 30	33 x 33	46 11/16	4
H24361201	1 Cover Hatch	24 x 36	33 x 39	51 1/16	4
H30301201	1 Cover Hatch	30 x 30	39 x 33	51 1/16	4
H30361201	1 Cover Hatch	30 x 36	39 x 39	55 1/8	4
H30481201	1 Cover Hatch	30 x 48	39 x 51	64 3/16	4
H36361201	1 Cover Hatch	36 x 36	45 x 39	59 9/16	5 1/2
H36481201	1 Cover Hatch	36 x 48	45 x 51	68	5 1/2
H42421201	1 Cover Hatch	42 x 42	51 x 45	68	5 1/2
H30481301	2 Cover Hatch	30 x 48	39 x 51	64 3/16	4
H30541301	2 Cover Hatch	30 x 54	39 x 57	69 1/16	4
H36481301	2 Cover Hatch	36 x 48	45 x 51	68	5 1/2
H36601301	2 Cover Hatch	36 x 60	45 x 63	77 7/16	5 1/2
H42481301	2 Cover Hatch	42 x 48	51 x 51	72 1/8	5 1/2
H48481301	2 Cover Hatch	48 x 48	57 x 51	76 1/2	5 1/2
H48541301	2 Cover Hatch	48 x 54	57 x 57	80 5/8	5 1/2
H48721301	2 Cover Hatch	48 x 72	57 x 75	94 3/16	5 1/2
H60601301	2 Cover Hatch	60 x 60	69 x 63	93 7/16	5 1/2

Note: All dimensions are in inches.

### Single Cover Style



### Double Cover Style



## ANGLE FRAME, H20, LIFT ASSIST WITH SAFE HATCH® SAFETY ACCESS SYSTEM

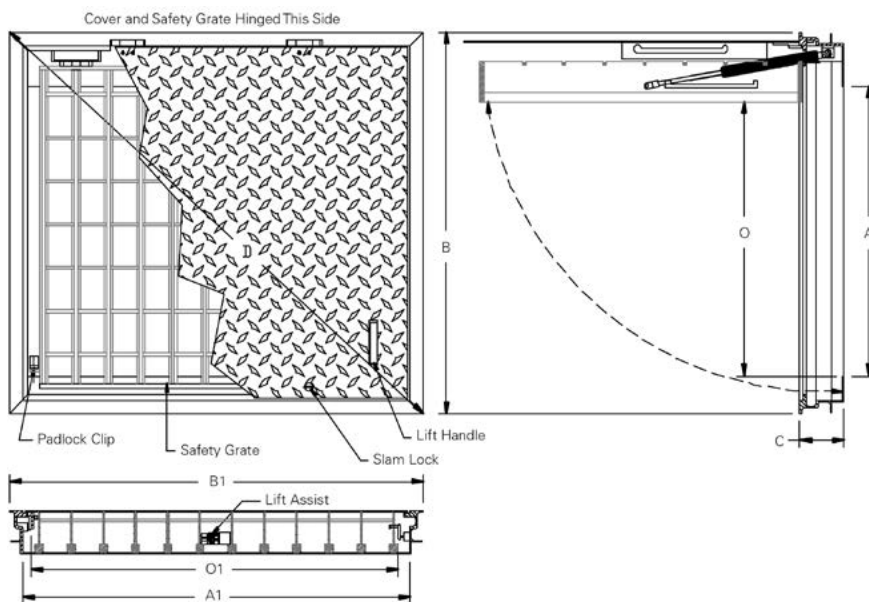
- Unintended vehicular traffic rated
- Safety orange aluminum safety grate system for fall through protection and controlled confined space entry
- Red stainless steel hold open arm
- Heavy duty stainless steel hinges
- Heavy duty stainless steel lift assist for SAFE HATCH Safety Access System
- Aluminum lift handle
- Extruded aluminum frame
- Exterior of frame coated with black primer
- Stainless steel slam lock with removable T-handle and threaded stainless steel plug
- Heavy duty stainless steel lift handle
- 1/4" aluminum diamond plate cover

See aluminum hatch options on pages 8 and 9 for additional options.

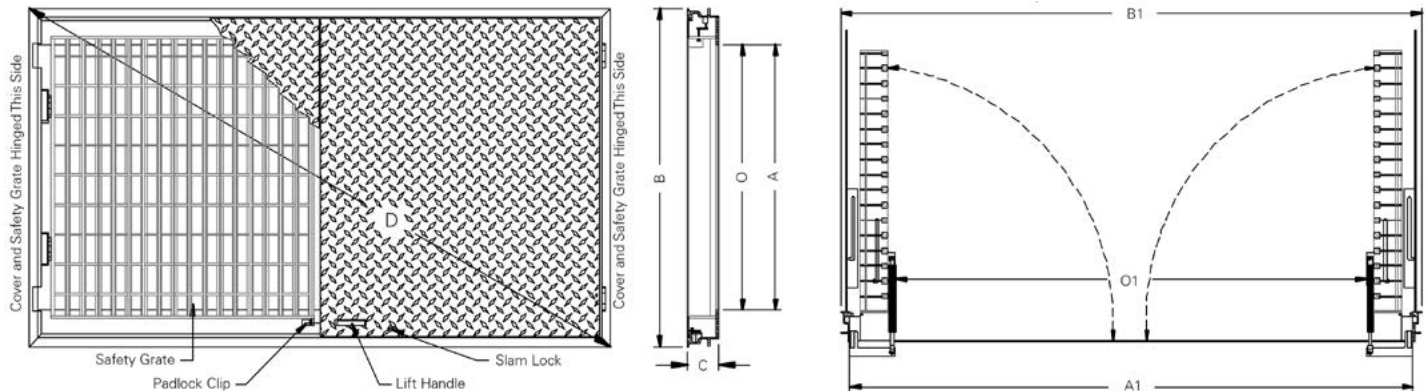
Do not place in wheel line.



### Single Grate, Single Cover Style



## Double Grate, Double Cover Style



Angle Frame, H20, Lift Assist with SAFE HATCH® Safety Access System

Catalog Number Aluminum	Description	Unobstructed Clear Opening O x O1	Inside Dimensions A x A1	Outside Dimensions B x B1	Height C	Diagonal D
----------------------------	-------------	---	--------------------------------	---------------------------------	-------------	---------------

### Single Grate, Single Cover Style

H24241291	1 Cover Hatch	24 x 24	26 x 27	37 x 30	5 1/2	47 5/8
H24301291	1 Cover Hatch	24 x 30	26 x 33	37 x 36	5 1/2	51 5/8
H24361291	1 Cover Hatch	24 x 36	26 x 39	37 x 42	5 1/2	56
H30301291	1 Cover Hatch	30 x 30	32 x 33	43 x 36	5 1/2	56 1/16
H30361291	1 Cover Hatch	30 x 36	32 x 39	43 x 42	5 1/2	60 1/8
H30481291	1 Cover Hatch	30 x 48	32 x 51	43 x 54	5 1/2	69
H36361291	1 Cover Hatch	36 x 36	38 x 39	49 x 42	5 1/2	64 9/16
H36481291	1 Cover Hatch	36 x 48	38 x 51	49 x 54	5 1/2	72 15/16
H42421291	1 Cover Hatch	42 x 42	44 x 45	55 x 48	5 1/2	73

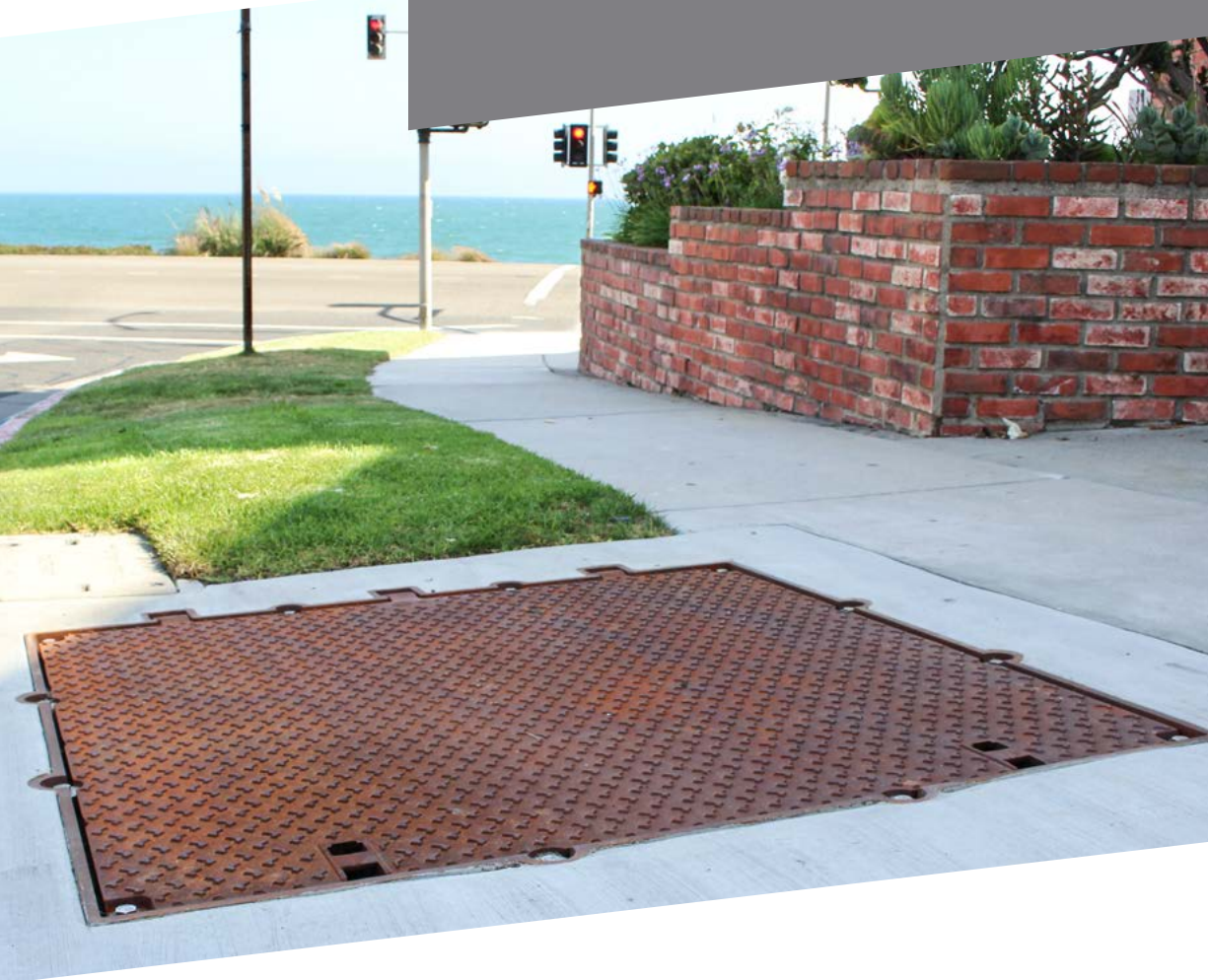
### Double Grate, Double Cover Style

H30481391	2 Cover Hatch	30 x 48	30 x 66	40 x 69	5 1/2	79 3/4
H30541391	2 Cover Hatch	30 x 54	30 x 72	40 x 75	5 1/2	85
H36481391	2 Cover Hatch	36 x 48	36 x 66	46 x 69	5 1/2	82 15/16
H36601391	2 Cover Hatch	36 x 60	36 x 78	46 x 81	5 1/2	93 1/8
H42481391	2 Cover Hatch	42 x 48	42 x 66	52 x 69	5 1/2	86 3/8
H48481391	2 Cover Hatch	48 x 48	48 x 66	58 x 69	5 1/2	90 1/8
H48541391	2 Cover Hatch	48 x 54	48 x 72	58 x 75	5 1/2	94 13/16
H48601391	2 Cover Hatch	48 x 60	48 x 78	58 x 81	5 1/2	99 5/8
H48721391	2 Cover Hatch	48 x 72	48 x 90	58 x 93	5 1/2	109 5/8
H60601391	2 Cover Hatch	60 x 60	60 x 78	70 x 81	5 1/2	107 1/16
H60721391	2 Cover Hatch	60 x 72	60 x 90	70 x 93	5 1/2	116 3/8

Note: All dimensions are in inches. All weights are in pounds.



## Modular Covers and Ductile Iron Hatches



## ERMATIC® MODULAR COVERS

The ERMATIC Modular Cover system is a comprehensive and highly engineered range of access covers for a wide variety of underground services. This modular system can be customized to fit any underground vault dimension or cover configuration. The ERMATIC range leverages the global engineering and design experience within EJ with enhanced ergonomic design and security.

### Features/Options

- Pedestrian to airport rated (or EN124 Standards – B125, C250, D400, E600, F900)
- Wide range of cover sizes from 24" x 24" and larger
- Water resistant
- Security locking
- Available with hinged and spring loaded struts for assisted opening
- Ergonomic lift handles for opening
- Available with safety grates and/or safety railings
- Cover options: solid cover with LLLL® slip resistant tread, recessed for concrete infill or brick pavers, or cover with removable inner hatch/cover
- Available with PREMARK® anti-skid coating

### Project Applications

- Sewerage: inspection pits for sludge chambers, access shafts for large plants, etc.
- Telecommunications: cable jointing chambers, etc.
- Utility: lighting, signals, transformer pits, cable joint boxes, etc.

### Project Types

- Airports and ports
- Railways
- Tunnels
- Power stations
- Water treatment and purification plants
- Manufacturing plants
- Exhibition centers, leisure parks, stadiums, and other public arenas

The ERMATIC range of modular covers are produced in France.



**Modular Construction**—The use of modular elements gives a vast range of sizes. Frame elements (side frames and end plates) are assembled using bolts and aluminium joints to provide linear openings for even the longest ducts. Above clear opening spans of 47 3/16" (1200 mm), ERMATIC units use removable beams supported in boxes which are fixed to the frames. This allows the construction of units to suit the largest openings.

### Ultimate Protection

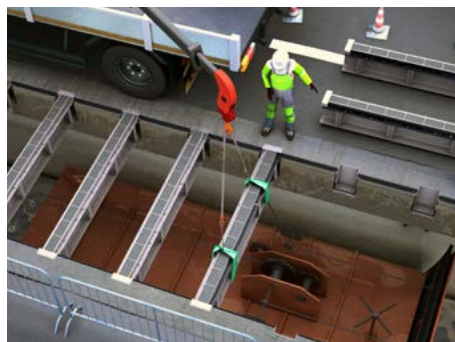
ERMATIC products assure protection against damage, debris or aggressive chemicals, and allow designers to conceal underground services.



1/2/3 covers unit



Continuous duct cover



Removable beams give unobstructed access to large vaults.



Modular design allows for infinite length to accommodate even the longest duct systems.



DUCTILE IRON HINGED HATCH ACCESS ASSEMBLY

Ductile iron access hatches have been designed for improved ergonomics, and are available in heavy duty and airport extra heavy duty applications.

On a cover that can weigh as much as 550 lb, the lifting force required to open the cover is less than 35 lb due to the uniquely designed mechanical strut.

The self-engaging safety bar provides added protection while the underground infrastructure is accessed, and safety grates can be specified for added fall through protection.



Features

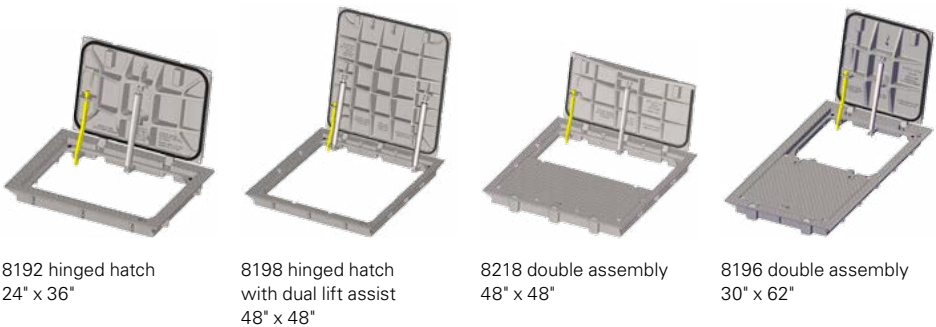
- Ductile iron frame and cover
- Cover opens to 105°, safety catch and removal at 90°
- Self-engaging safety bar
- EON LOCK® bolting
- MPIC® multi-tool pick bar
- Bolting

Options

- Mechanical lift assist (standard feature for airport rated models)
- Top and bottom flange designs
- Safety grate
- INFRA-RISER® adjustment riser
- Forming skirt

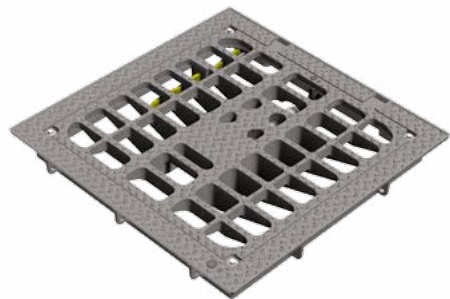
Wide Availability of Sizes

Shown below are just a sample of the various cover openings and sizes. See the table below for the full range of available clear opening sizes and load ratings.



Ductile Hinged Hatch Clear Opening Options		
Clear Opening Size	Airport Extra Heavy Duty Series No.	Heavy Duty Series No.
24 x 24	8195	8215
24 x 36	8192	8212
30 x 30	8196	8216
30 x 62	8196—Double	8216—Double
36 x 36	8197	8217
36 x 74	8197—Double	8217—Double
48 x 48	8198	8218
48 x 48	—	8218—Double

Note: All dimensions are in inches.



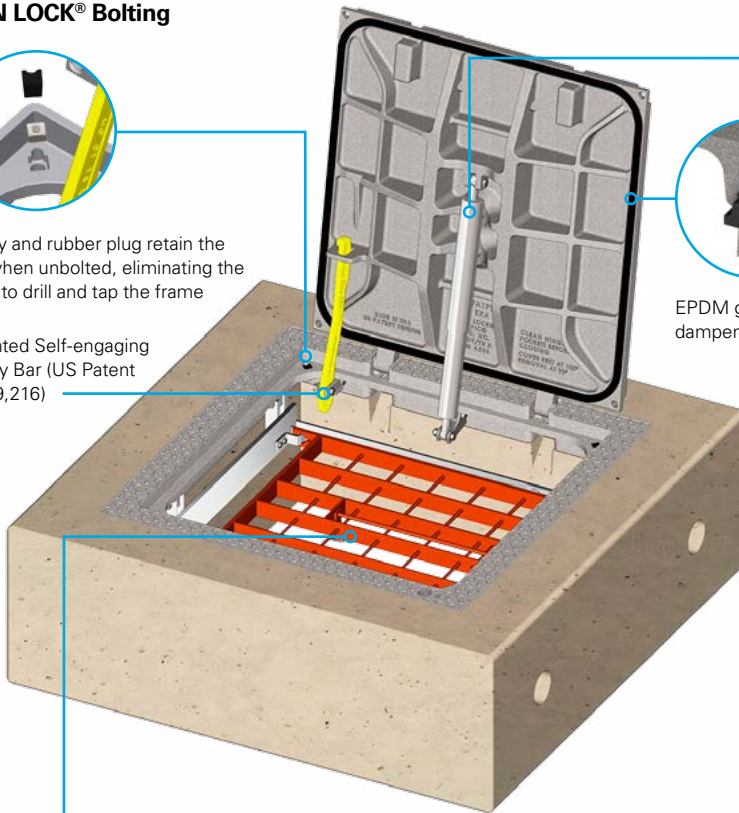
8197 grate option  
36" x 36"



**EON LOCK® Bolting**

Cavity and rubber plug retain the nut when unbolted, eliminating the need to drill and tap the frame

Patented Self-engaging Safety Bar (US Patent 8,449,216)



EPDM gasket for sound dampening

**Lift Assist**

Lift Assist is a corrosion-resistant stainless steel mechanical spring strut. The rugged design is clean and maintenance free. The strut takes up less space in the clear opening than a traditional spring assist. It is fully self-contained, protecting coils from exposure to the elements.

Made without internal gases or seals, the struts have an effective operating temperature range of -30° F to 400° F. The durability has been tested at over 150,000 cycles.

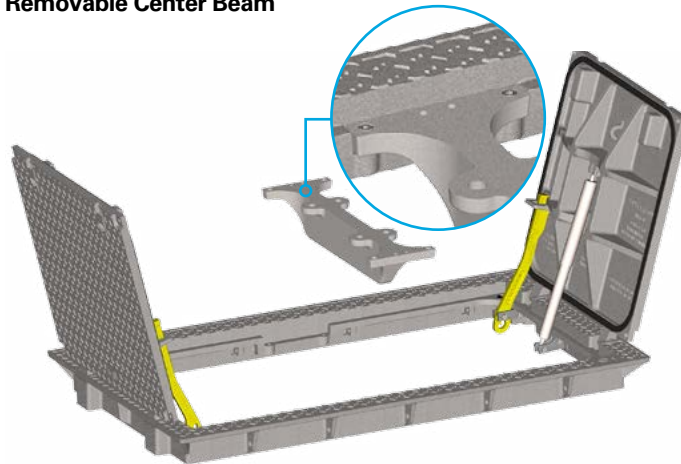
**Optional Cam Lock**

Security cam lock and wrench shown. Wrench is only removable when cover is in the locked position.

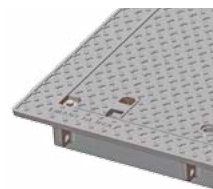
**Optional Safety Grate**

Provides additional safety features

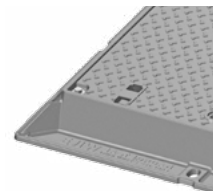
- Doors cannot be closed unless the fall through protection has been put back in place (protecting the next operator).
- Visual inspections and limited maintenance can be done while safety grate is left in place.
- Orange safety grates create a visual barrier around the pit; promotes an awareness of the hazard.
- Grate can be locked independently of the hatch, adding another level of security when needed.

**Optional Forming Skirt****Removable Center Beam**

Removable center beam provides a much greater clear opening access on several double hatch models. Removal/replacement is simple with 4 bolts securing the beam to the frame.

**Frame Options**

Top flange frame



Bottom flange frame

Available forming skirt simplifies precasting the hatch in concrete—no need for added forming to protect the inner hatch. The leave-in-place aluminum skirt can be made to fit any concrete slab thickness. (Image showing hatch upside down with forming skirt.)



Visit our YouTube Channel for videos on this and other products at [www.youtube.com/AccessInfrastructure](http://www.youtube.com/AccessInfrastructure)

## Additional Fabricated Solutions





# Fabricated Products

EJ manufactures an extensive range of access solutions in a variety of materials—including galvanized steel, stainless steel, aluminium, ductile iron and composite—in our world class production facilities.

Our range of fabricated steel drainage grating conforms to rigorous DOT and municipal standards. Approved products are used on federal highway projects across the USA.

## Applications

- Infrastructure access
- Drainage and storm water management
- Utility and telecommunication vaults
- Pump and lift stations
- Decorative streetscapes

## Services

- Knowledgeable customer support
- Experienced engineering
- High quality materials and hardware
- Automated welding and machining
- Hand fabrication
- Large volume production
- Custom solutions

## Products

- Access hatches
- Infill floor doors
- Roadway grates
- Reticuline grates
- Bar grates
- Hand rails and safety bars
- Trash racks and intake screens
- Other custom fabricated solutions to satisfy your specific application



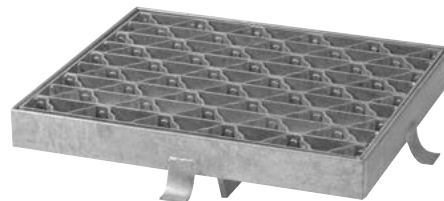
Fabricated aluminum and steel access hatches are available in a wide range of styles, equipped with the features you need for your project.



Simplify access for water treatment and other applications with top mount hatches.



Our fabricated grating can be customized to fit existing drainage structures.



Including galvanized riveted reticuline and bar grates.





# We Design Solutions

When the standard product doesn't quite fit your needs, contact your EJ Sales Representative for additional options and custom solutions. The following pages show some examples of custom hatches for specific applications.



When an aluminum access hatch is placed close to a roadway, some engineers opt for H20 load ratings, just in case a vehicle unintentionally pulls onto the curb. This hatch met the customer's specifications for this potential load and complies with the utility's standard operating procedures for accessing vaults.



This example shows custom ADA compliant ventilation grating designed to fit the electric utility's existing structure. The unit was supplied with one large frame with removable sections which provided full access to the underground transformers. The new design met ADA and AASHTO H20 standards while providing enhance security features.



Meeting the need for a 84" x 102" clear opening, the fabricated products team at EJ not only met this requirements, but provided a huge ergonomic benefit—it only takes one person to open these massive covers. Coupled with the self-engaging safety bars that hold the covers open to 90°, the hatch is easy to use.



Utilities often have a combination of requirements that they are trying to fulfill with access hatches. With this product, the engineers needed a combination of solid hatch covers and ventilation. The entire product was supplied with the safety sure grip finish.



Another electric utility needed a custom access solution for their existing vaults. Prior to this new hatch, they bolted heavy plates to the structure which were very difficult to access. The new EJ solution provided ease of access through a center round cover or removal of larger rectangular covers. Each cover was engraved with messaging that met code requirements.



## Retrofit and Top Mount



Some aging infrastructure can create a hazard for pedestrians—not only a trip hazard, but also the possibility of old steel grates failing over the top of vaults. The before picture (left) shows a potentially dangerous situation, and the city opted to take proactive steps to avoid a potential lawsuit. The after photo (right) shows a product supplied by EJ, with a solid cover on the lower section, and ventilation grating towards the top. The product features a concealed padlock clip, and improved ergonomics for utility workers. It's a win-win scenario.



Whether replacing worn out access hatches, or for new projects, top mount hatches simplify installation.



# Custom Applications



By using a plain aluminum plate, without diamond plate, and the safety sure grip, an access hatch can blend seamlessly into concrete. Showing closed position (above) and open position (right).



A utility had a need to create a channel to help manage network cables from above ground. They worked with the engineering team at EJ to develop a custom product that solved their problem.



In this application, it was important that water did not get into the system. The engineering team at EJ provided a hatch with a gasket and a cover that overlapped the frame. The cover was held closed with compression latches.



# Made in the USA

EJ fabricated products are made and assembled in the USA at one of our facilities in New York, Utah, or Ohio and meet Buy America requirements.





ejco.com  
800 626 4653



#### Americas

**800 626 4653**  
231 536 2261

#### EMEA

Europe, Middle East  
and Africa  
**+33 (0)344 08 28 00**

#### Asia-Pacific

**+61 (0)7 3216 5000**

#### EJ

301 Spring Street  
PO Box 439  
East Jordan, MI 49727  
800 626 4653  
231 536 2261  
us.sales@ejco.com

Registered Mark(s)



ERMATIC®  
EON LOCK®  
INFRA-RISER®  
MPIC®  
SAFE HATCH®