



ej

135
Years
Since 1883

DURALAST® Detectable Warning Plates



DURALAST® Detectable Warnings

Durable, Reliable, Proven!



DURALAST Cast Iron Detectable Warnings

DURALAST® Detectable Warning Plates help warn the blind or visually impaired of the approaching street. Engineered to outlast the sidewalk, this long-lasting cast iron product withstands rigorous urban conditions, such as snow plows, street cleaning machines, and vehicular traffic. Lower your maintenance and product life cycle costs by using DURALAST Detectable Warnings—your Americans with Disabilities Act (ADA) compliant, Accessibility for Ontarians with Disabilities Act (AODA) compliant, and environmentally friendly solution.



Resistant to the elements

Cast iron's inherent resistance to the elements, snow plows, and snow melting chemicals make it a natural fit for severe climates.

- Long-wearing cast iron
- Impervious to vehicular and snow plow traffic
- Corrosion resistant
- Permanently embedded into concrete
- 10 year limited warranty

DURALAST is a registered trademark of EJ Group, Inc.

Product Features

Durable and Cost Effective

- Over 500 times more durable than composite
- Engineered to outlast the sidewalk — long-lasting and corrosion resistant
- Easy to install
- Maintenance free
- 10 year limited warranty

Made in the USA from Recycled Materials

- Eligible to earn LEED® points in the Materials and Resources category
- Cast iron is an environmentally responsible product that is completely recyclable after its useful life

Americans With Disabilities Act (ADA) Compliant

- Natural finish meets color contrast requirements
- Slip resistant textured surface – greater than 0.8 coefficient of friction
- DOT approved (contact your local Sales Representative for specification approvals)
- Bolting ensures compliance during installation

Accessibility for Ontarians with Disabilities Act (AODA) Compliant



Product Data

Product Testing

Maintenance free cast iron detectable warnings are designed to fully comply with the American Disabilities Act Accessibility Guidelines (ADAAG). Contact your local sales representative for other independent laboratory tests and research studies.

Product Durability—Wear Resistance

Independent lab test* demonstrates DURALAST® Detectable Warning Plates durability. Per ASTM C501-84 standards, an independent third party laboratory test was conducted to determine the wear index values of DURALAST Detectable Warning Plates versus a competing composite surface. Test results indicate that DURALAST plates are over 500 times more wear resistant than composites. Additional impact testing on DURALAST cast iron plates proves they are more resilient to the demanding installation environments of these products.

| Test Results | | |
|--------------------------------------|---------------------|---------------|
| Physical Properties | Results | Specification |
| Slip Resistance | 1.10 Dry / 1.06 Wet | ASTM C-1028 |
| Wear Resistance (Abrasion) | 7333 | ASTM C-501-84 |
| Impact Resistance | >238 Newtons | ASTM D-1709 |
| Adhesion to Concrete (Bond Strength) | >5000 lbs | ASTM D-482 |
| Tensile Strength | 35,000 PSI | ASTM A-48 |
| Design Compliance | Fully Compliant | ADAAG |

Over **500** times more durable
than composite!

7333
DURALAST
wear index

13.7
Composite Tile
wear index

*Testing performed by 3rd party, ABIC Testing Laboratories, Inc.

Sizes and Installation

Standard Sizes

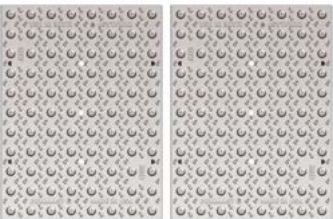
| Standard Sizes | |
|----------------|----------------|
| Size | Product Number |
| 18" x 24" | 00700561 |
| 24" x 24" | 00700571 |
| 30" x 24" | 00700721 |



Sizes for Your Application

3' Ramp

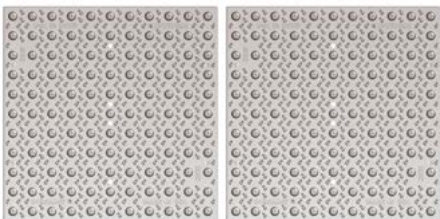
00700561C01



18" x 24" 18" x 24"

4' Ramp

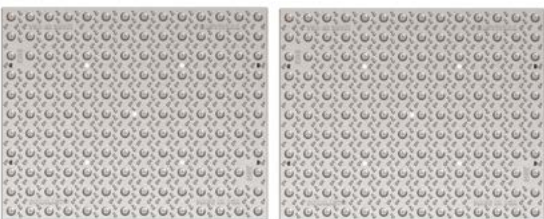
00700571C01



24" x 24" 24" x 24"

5' Ramp

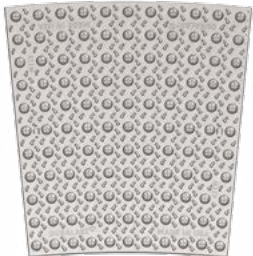
00700721C01



30" x 24" 30" x 24"

Radial Sizes

| Radial Sizes | |
|--------------|----------------|
| Radius | Product Number |
| 10' | 00700611 |
| 15' | 00700615 |
| 17 1/2' | 00700617 |
| 20' | 00700621 |
| 25' | 00700625 |
| 30' | 00700631 |
| 35' | 00700635 |



Radial plates are designed to fit your unique curb line.



Installation Instructions



Optional: Hand-tighten plates together with stainless steel bolts. This helps ensure proper installation and compliance.



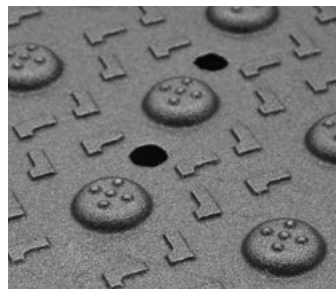
Step 1: Set cast iron Detectable Warning Plate into wet concrete in accordance with ADAAG (American Disabilities Act and Accessibility Guidelines).



Step 2: Tamp plate thoroughly with rubber mallet until concrete seeps through vent holes.



Step 3: Clean off excess concrete from the plate and finish concrete around the plate.



Finish Options

EJ recommends specifying cast iron products in their natural state to minimize any unnecessary environmental impact. DURALAST products are also offered in black asphalt dip. Contact your local sales representative for powder coating or special requests. Natural finish meets color contrast requirements for ADA compliance.



Natural Finish
Uncoated



Black Asphaltic Dip Finish
Coated

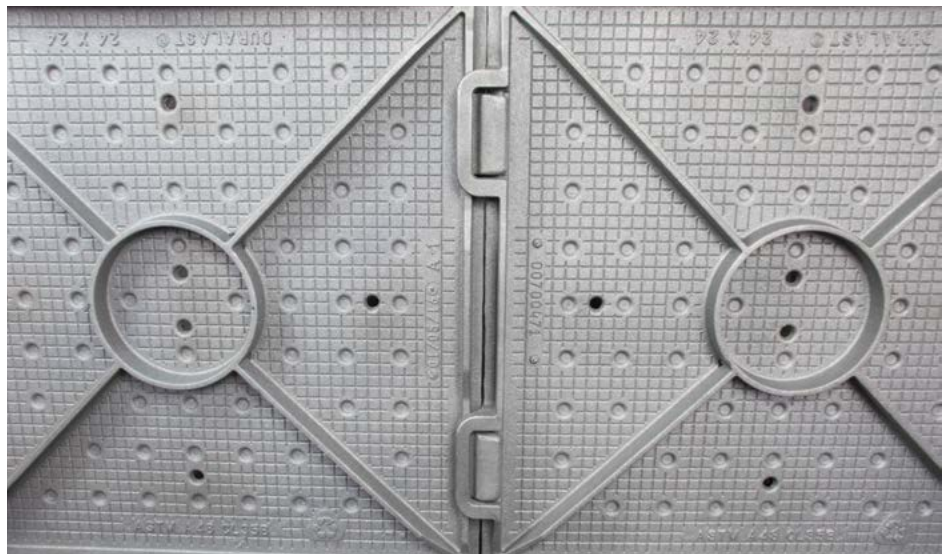
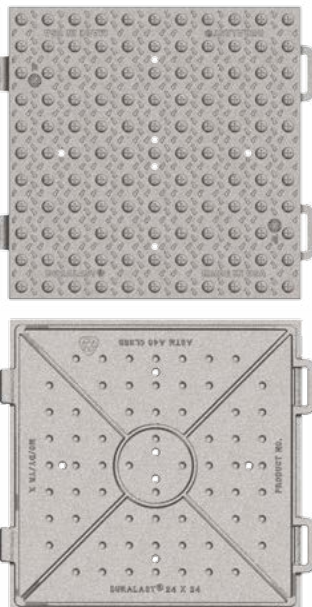
New I-LOK® Interlocking Plates

In addition to the standard DURALAST detectable warning plates, EJ now offers the new I-LOK interlocking plate design.

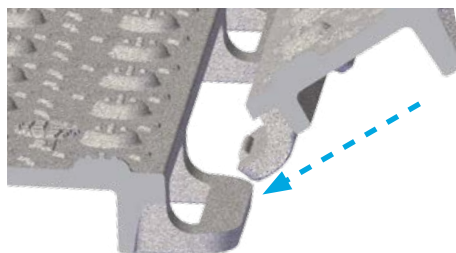
Save time during the installation by eliminating the need to bolt plates together. Simply connect and set.

Benefits

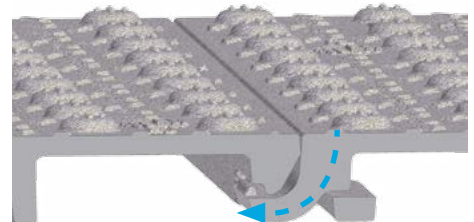
- No extra tools or hardware required
- Reduced setup time
- Uniform installation



24" x 24" (00700471) shown



Connect plates together by inserting both hook ends into the handles at 45 degree angle.



Once the plate is lowered, it will be engaged and interlock the plates together. Interlocked plates can be easily moved together and uniformly set in concrete.

Check with your EJ representative for available sizes.



"Set it and forget it... These things are bulletproof. I have yet to find a more durable detectable warning system, and when it comes down to it their durability makes them the most cost effective choice on the market." — Brian Doyal, Carson City, NV Public Works



ejco.com
800 626 4653



Americas

800 626 4653
231 536 2261

EMEA

Europe, Middle East
and Africa

+33 (0)344 08 28 00

Asia-Pacific

+61 (0)7 3216 5000

EJ

301 Spring Street
PO Box 439
East Jordan, MI 49727
800 626 4653
231 536 2261
us.sales@ejco.com

Registered Mark(s)



DURALAST®
I-LOK®